

# Stone Flower Patches

Featuring Fall 2018 Collective and Classics by Kaffe Fassett

The placement of light and dark prints simulates sunshine and shadows around these picturesque stone flower urns.

<b>Collection:</b>	Fall 2018 Collective and Classics by Kaffe Fassett
<b>Technique:</b>	Piecing
<b>Skill Level:</b>	Intermediate
<b>Crafting Time:</b>	Weekend*
<b>Finished Size:</b>	Quilt Size: 45" x 63" (114.30cm x 160.02cm) Block Size: 9" (22.86cm) square

\*Crafting time based on Intermediate skill level



Project designed by Liza Lucy

Tech edited by Kathryn Patterson

## Fabric Requirements

DESIGN	COLOR	ARTICLE CODE	YARDAGE
(A) Stone Flower	Lavender	PWGP173.LAVEN	1¼ yards (160.02cm)*
(B) Tiddlywinks	Blue	PWGP171.BLUEx	¼ yard (22.86cm)
(C) Aboriginal Dot	Iris	GP71.IRISX	¼ yard (22.86cm)
(D) Jumble	Duck Egg	PWBM053.DUCKE	¼ yard (22.86cm)
(E) Row Flowers	Blue	PWGP169.BLUEx	¼ yard (22.86cm)
(F) Spot	Grape	GP70.GRAPE	¼ yard (22.86cm)
(G) Paperweight	Blue	PWGP020.BLUEx	¼ yard (22.86cm)
(H) Guinea Flower	Blue	GP59.BLUE	¼ yard (22.86cm)
(I) Spot	Chalk	GP70.CHALK	¼ yard (22.86cm)
(J) Tiddlywinks	Contrast	PWGP171.CONTR	¼ yard (22.86cm)
(K) Millefiore	Lilac	GP92.LILAC	¼ yard (22.86cm)
(L) Guinea Flower	Turquoise	GP59.TURQU	¼ yard (22.86cm)
(M) Zigzag	Contrast	PWBM043.CONTR	¼ yard (22.86cm)
(N) Spot	Duck Egg	GP70.DUCKE	¼ yard (22.86cm)
(O) Diamond Stripe	Blue	PWGP170.BLUEx	½ yard (45.72cm)**

\* extra fabric allowed for fussy cutting

\*\* binding

## Backing (Purchased Separately)

44" (111.76cm) wide

OR

108" (274.32cm) wide

Enchanted Blue PWGP172.BLUEx 1½ yards (1.37m)

## Additional Requirements

- 53" x 71" (134.62cm x 180.34cm) batting
- 100% cotton thread in a color to blend
- Sewing machine
- Rotary cutter/mat/ruler
- Basic sewing and pressing supplies



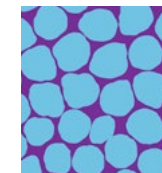
(A)



(B)



(C)



(D)



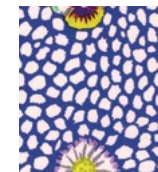
(E)



(F)



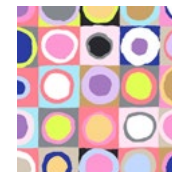
(G)



(H)



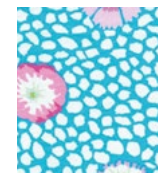
(I)



(J)



(K)



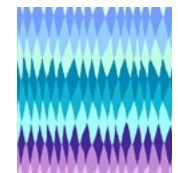
(L)



(M)



(N)



(O)



Backing  
108"  
(274.32cm)

## Cutting

### WOF = Width of Fabric

During the construction of this quilt the prints will be referred to by value, as light or dark. When cutting patches, place in piles according to size and value. To achieve the look of the sample quilt, fussy cut the **Fabric A** dark squares from predominantly the background color and the light squares from the urn portion of the print. Fabrics **B** through **G** are considered dark and Fabrics **H** through **N** are considered light.

### Fabric A, fussy cut:

(12)  $9\frac{1}{2}$ " (24.13cm) squares, centering the stone flower urn

(6)  $3\frac{7}{8}$ " (9.84cm) squares, (5) dark and (1) light

(12)  $3\frac{1}{2}$ " (8.89cm) squares, (9) dark and (3) light

### Fabrics B through N, cut from each:

(1)  $3\frac{7}{8}$ " x WOF (9.84cm x WOF); sub-cut (5)  $3\frac{7}{8}$ " (9.84cm) squares

(1)  $3\frac{1}{2}$ " x WOF (8.89cm x WOF); sub-cut (10)  $3\frac{1}{2}$ " (8.89cm) squares

### Fabric O, cut:

Enough  $2\frac{1}{2}$ " (6.35cm) bias strips to make 230" (5.84m) of finished binding

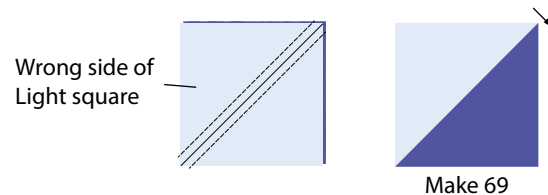
## Instructions

All seam allowances are  $\frac{1}{4}$ " (.64cm) and pieces are sewn right sides together.

**Note:** To simplify the cutting instructions, a few extra  $3\frac{7}{8}$ " (9.84cm) and  $3\frac{1}{2}$ " (8.89cm) light print squares were cut. During construction, randomly select light and dark prints to give each block a unique look.

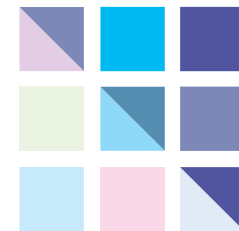
1. Draw a diagonal line on the wrong side of (35)  $3\frac{7}{8}$ " (9.84cm) light squares.
2. Place a marked light square and a  $3\frac{7}{8}$ " (9.84cm) dark square right sides together, aligning raw edges. Sew  $\frac{1}{4}$ " (.64cm) from each side of the drawn line, cut on the drawn line, open, and press. Repeat to make (69) half square triangle (HST) units, which should measure  $3\frac{1}{2}$ " (8.89cm) square. (**Fig. 1**)

Fig. 1



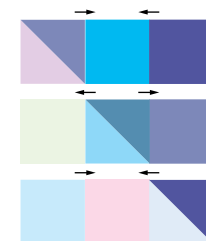
3. Select (3) HST units, (3) dark  $3\frac{1}{2}$ " (8.89cm) squares, and (3) light  $3\frac{1}{2}$ " (8.89cm) squares and arrange in (3) rows, placing the darks toward the upper right and lights toward the lower left. (**Fig. 2**)

Fig. 2



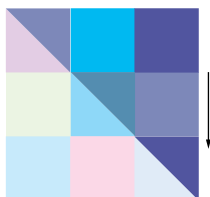
4. Sew the rows, pressing the seam allowances in opposite directions. (**Fig. 3**)

Fig. 3



- Sew the rows together matching the seams to complete the Nine-Patch Block, which should measure  $9\frac{1}{2}$ " (24.13cm) square. (**Fig. 4**) Press the seam allowances in one direction.

**Fig. 4**



Nine Patch Block  
Make 23

- Repeat Steps 3 through 5 to make (23) total Nine-Patch Blocks.

## Quilt Top Assembly

**Note:** Follow the **Quilt Layout** diagram on page 5 while assembling the quilt. Press the seam allowances of the rows in opposite directions.

- Sew Nine-Patch Blocks and  $9\frac{1}{2}$ " (24.13cm) **Fabric A** squares together in the order shown, noting the orientation of the light and dark prints, to complete Row 1. In a similar manner, make Rows 2 through 7.
- Sew the rows together in order shown to complete the quilt top, which should measure  $45\frac{1}{2}$ " x  $63\frac{1}{2}$ " (115.57cm x 161.29cm). Press the seam allowances in one direction.

## Finishing

- Cut and piece the backing to measure 53" x 71" (134.62cm x 180.34cm).
- Sew together the  $2\frac{1}{2}$ " (6.35cm) **Fabric O** binding strips end to end using diagonal seams. Press seams open. Press the binding strip in half wrong sides together.
- Layer backing (wrong side up), batting, and quilt top (right side up). Baste the layers together and quilt as desired. Trim excess batting and backing even with the top after quilting is completed.
- Leaving an 8" (20.32cm) tail of binding, sew the binding to the top of the quilt through all layers matching all raw edges. Miter corners. Stop approximately 12" (30.48cm) from where you started. Lay both loose ends of binding flat along quilt edge. Where the loose ends meet, fold them back on themselves and press to form a crease. Using this crease as your stitching line, sew the two open ends of the binding right sides together. Trim seam to  $\frac{1}{4}$ " (.64cm) and press open. Finish sewing binding to quilt.
- Turn the binding to the back of quilt and hand-stitch in place.

# Stone Flower Patches

## Quilt Layout

